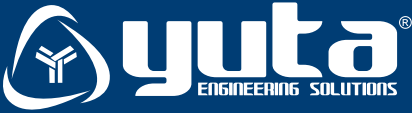


LOCKCELL®

LOCKCELL®**rOund**

LOCKCELL® 



TOOL SET AND INVENTORY MANAGEMENT SYSTEMS

WELCOME to INDUSTRY 4.0'A

BRAND NEW IN TOOL SETS AND INVENTORY MANAGEMENT SYSTEMS "ERP"

WAREHOUSE INVENTORY AND MANUFACTURING MANAGEMENT IN A SINGLE SOFTWARE

NO MORE PRODUCT LOSSES WITH MULTIPLE WAREHOUSE ADDING SYSTEM



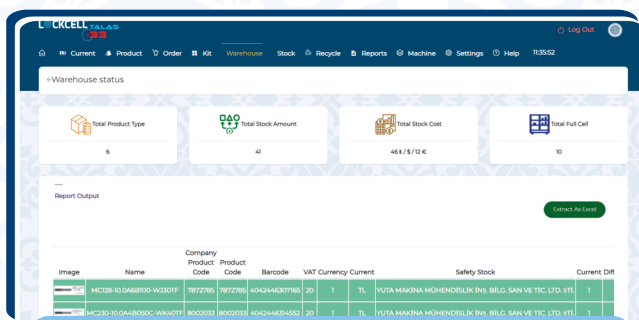
**MUCH MORE THAN
A SOFTWARE**

Lockcell Talas Software offers you much more than your expectations.



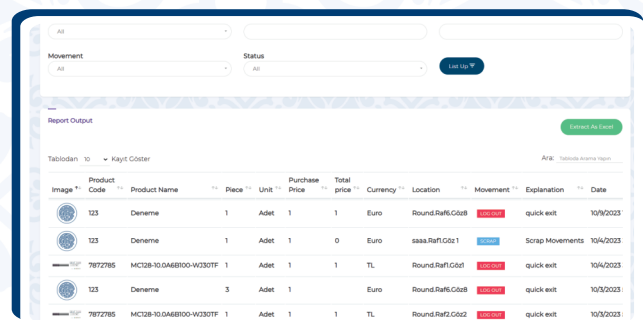
**MANAGE YOUR
PRODUCTS INDIVIDUALLY**

Lockcell round which can be reach maximum 2340 locked cells is unique in its class thanks to configurable size and cell number. It commonly uses in order to storage cutting tools, PPE, Medicine, Medical stuffs, mask and glove.



**TAKES YOUR CONSUMPTION
UNDER CONTROL**

you can follow instant product consumption who takes product and intended purpose (breaking, abrasion, start-up), intended place for which project thanks to TALAS SOFTWARE.



**WHAT DOES IT ADD
TO YOUR PRODUCTION?**

It controls your product consumption provides cost analysis, prevents product losses saves space, and is very simple to use and manage. It determines your safety stock quantities and you will not have to wait due to products running out of time.

SOFTWARE

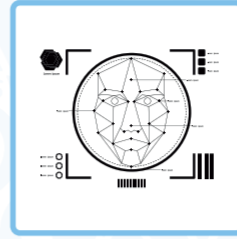
SOFTWARE CONTENT	TALAS 15	TALAS 25	TALAS 33
Login system with username and password	✓		
Entry system with RFID	✓		
Current card management	✓		
Product card management	✓		
Warehouse entry system	✓		
Warehouse exit system	✓		
Fast product exit system	✓		
Adding new modules	✓		
Machine management	✓		
Main, Search, Subgroups management	✓		
Currency management	✓		
Tax office management	✓		
UoM management	✓		
User management	✓		
Warehouse status reporting system	✓		
Product based storage system	✓		
Machine based storage system	✓		
Current based reporting systems	✓		
Central database	✓		
Key cabinet management	✓		
Stock issue transactions	✓		
Scrap management		✓	
Product authorization		✓	
Adding multiple alternative current accounts		✓	
Adding multiple alternative products		✓	
Document number management and excel transfer		✓	
Place of use management and export to excel		✓	
Intended use management and export to excel		✓	
Role-based authorization system		✓	
User-based restriction system		✓	
User-based mail management system		✓	
Exporting reporting to excel		✓	
Multiple usage place, purpose, flat, document number, user, product card and current loading from excel		✓	
Product return system		✓	
Mail time and day settings		✓	
Weekly safety stock, warehouse status and unused products emailed		✓	
Send daily product status mail		✓	
Safety stock tracking		✓	
Daily trading statistics		✓	
Daily movement report		✓	
Order management			✓
Kit management			✓
Access via remote system			✓
Serial number management			✓
Sharpening method			✓
Return of blind instruments			✓
Management system of measuring instruments			✓



*Login with RFID



*Login with fingerprint



*Login with face recognition



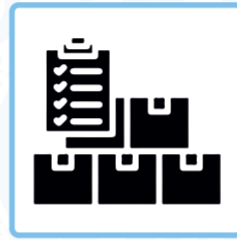
*Barcode reader



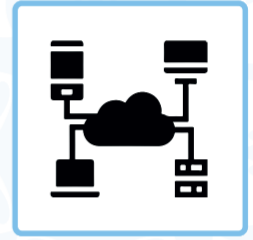
*Security camera



*Unlimited users



*Static warehouse management



*Database integration system



*Alternative products



*serial number tracking system



*Recycling and tracking system



*Scrap tracking



*Color selection (with RAL codes)

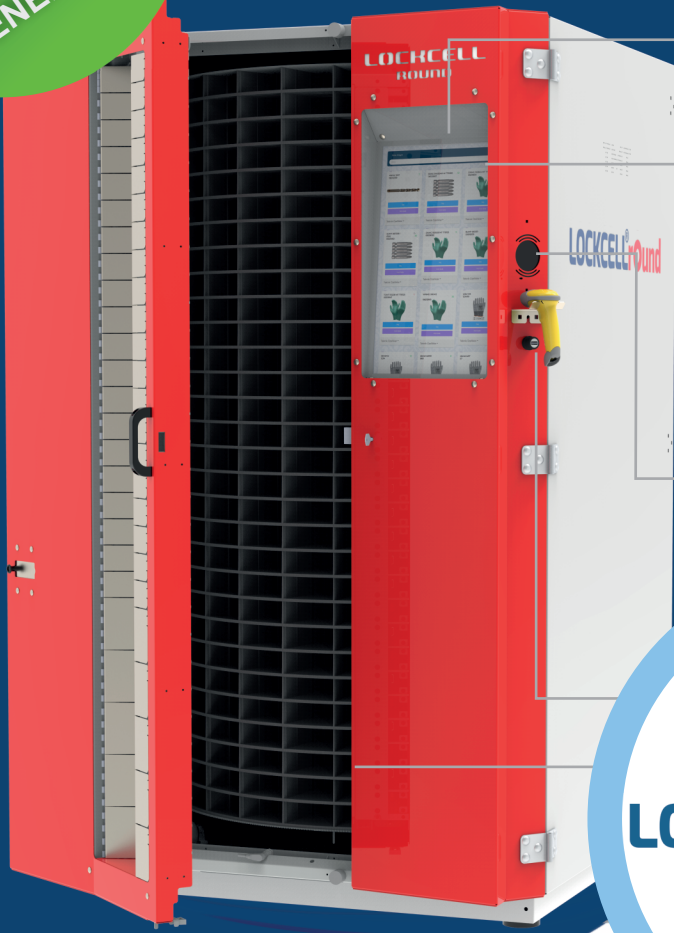


*Additional module (round+box+master)

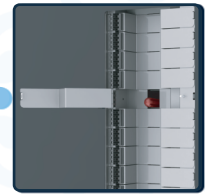
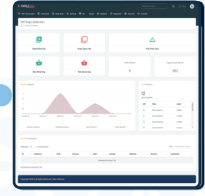
Lockcell Family

It is much safer, much more stylish, much more useful, with option features.

NEW
GENERATION



LOCKCELL®rOund



Your products are under control

LOCKCELL ROUND

Lockcell rOund offers maximum lock cell option on the purpose of storage small parts. Lockcell rOund is a new generation system in automated storage systems. LOCKCELL ROUND can reach maximum of 2340 locationn. The machine is only one in its class through this location range and size. Therefore not only can storage many product range but also can storage PPE products which use much in safely. You can storage your products one by one due to high range number of cell and you definetly %100 bring under control through this.

It offers storage to different size products in %100efficiency due to different cell sizes.

Requested products come to front of cap with rotary tambour system and relevant cap will open automatically with up to down rowed cap system. You can reach products that you want on shortest route due to it.

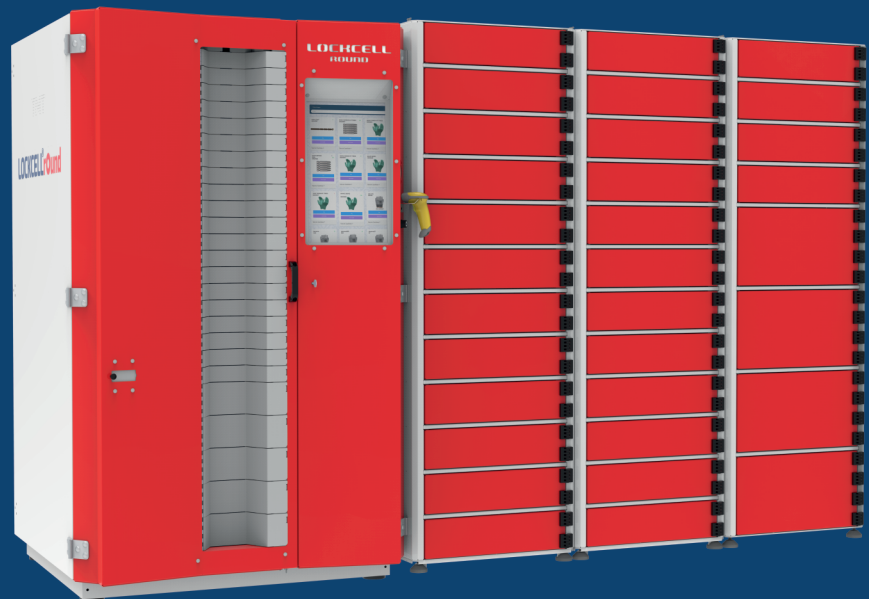
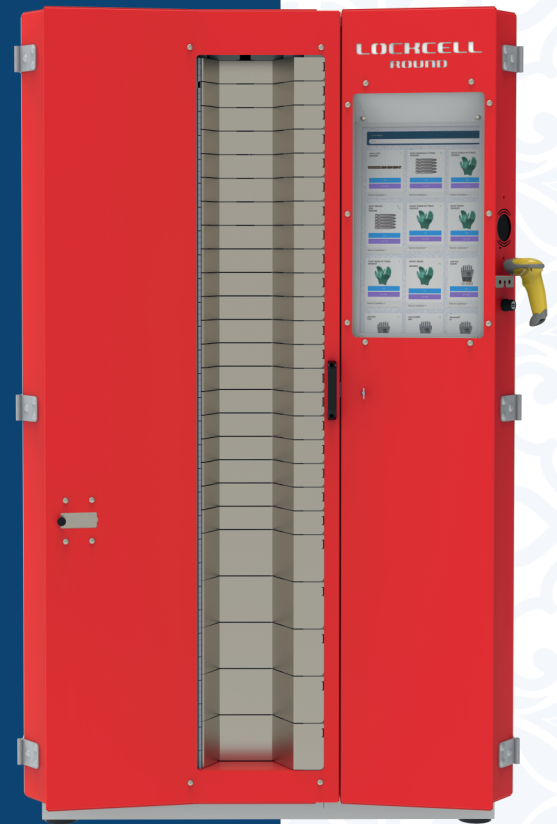
Cutting tools, medicine, electronic equipment, industriel equipment, computer equipment, PPE, portable hand tools, keys can be storage with LOCKCELL ROUND.



LOCKCELL ROUND GENERAL FEATURES

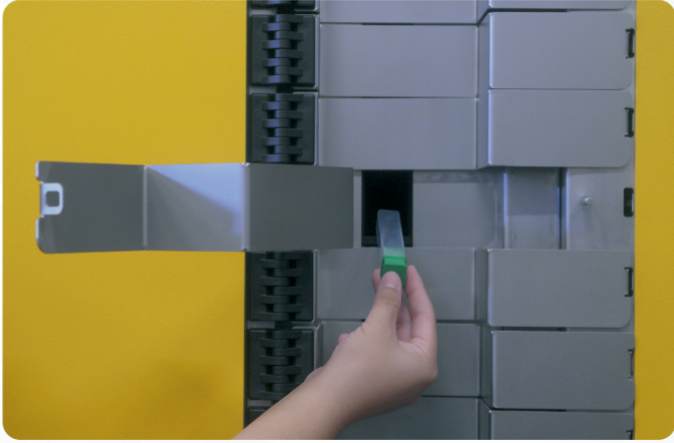
- Rapid reaching due to perfect ergonomic design
- Possibility to store only one product in each cell
- Access to products in the other cells is impossible due to opening of the relevant cell.
- The first and only compact machine with 2340 locations in the world
- It offers ease of handling in Office or factory due to compact design with 1.2m x 1.2m size
- It offers possibility to storage many product range due to differents types of size and cell types.
- Cost savings due to optimization of current warehouse capacity.
- Greater productivity due to faster product access.
- Protection and safety of personnel and stored products.
- Barcode reader.
- High stock capability with large volume.
- Safe sheet metal structure.
- Oven-daying sheet metal parts.
- User login with password and/or card.
- Operating voltage: 230V/50Hz
- 21" touchscreen
- Windows10 Pro operating system
- Lockcell talas software.
- * Power supply (UPS)

MACHINE INFORMATION	
Machine Height	1900 mm
Unit Width	1200 mm
Unit Depth	1200 mm



WIDE USAGE AREA FOR EACH COMPANY

DIFFERENT WAREHOUSE SPACE FOR EACH PRODUCT



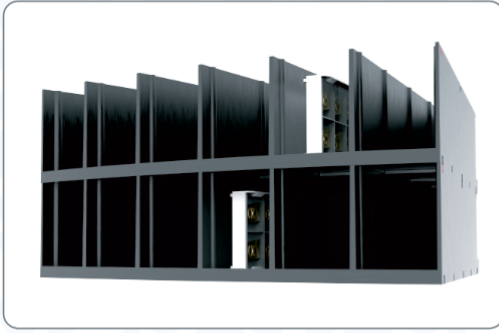
Fast product purchase

- It reaches the products selected with the product code, name or barcode in the fastest way.
- Only selected products are accessible.
- One or more products can be placed in the same eye.

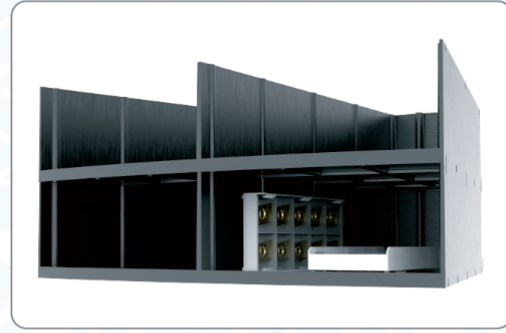


Barcode reader

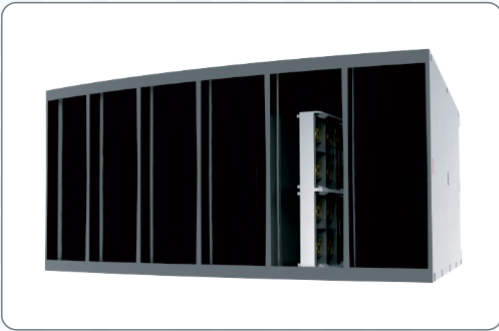
- Barcode reader to avoid coding errors.
- Fast product entry and exit.



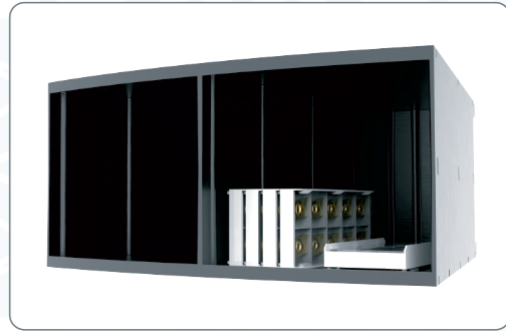
Cell type A



Cell type B

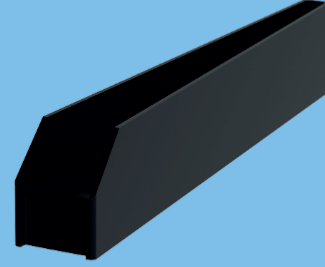
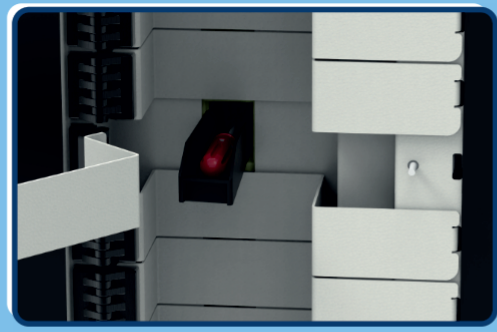
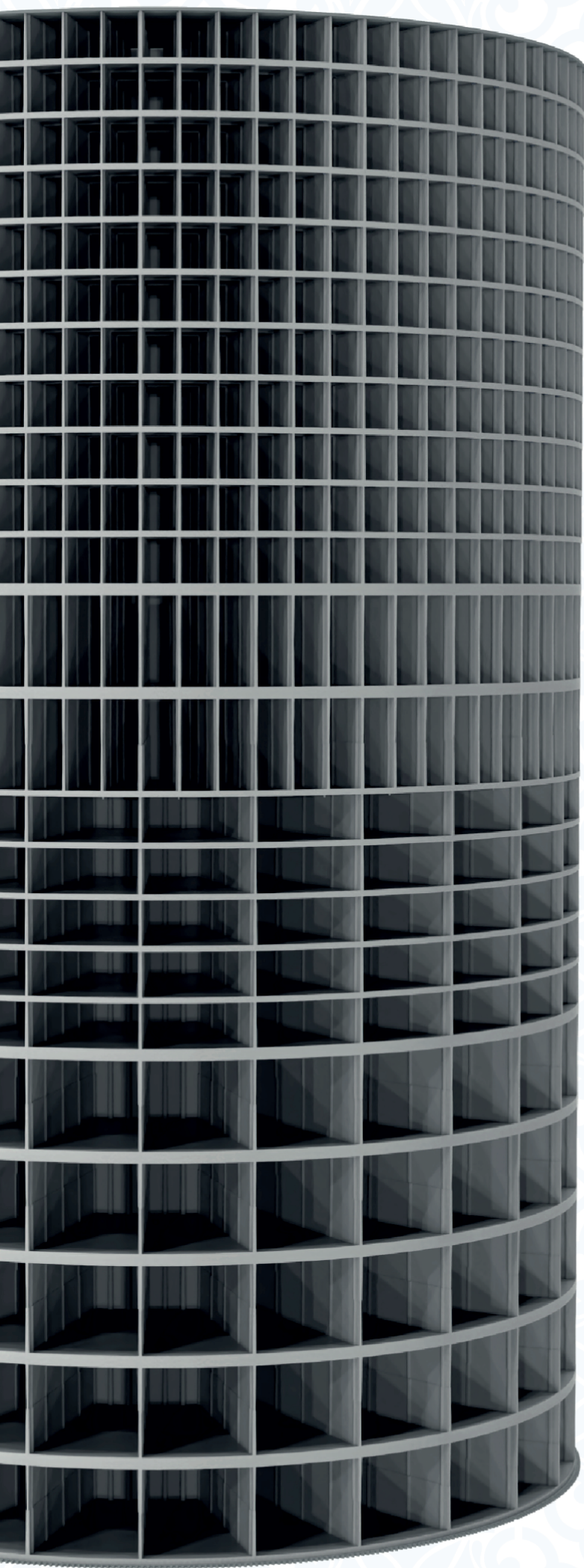


Cell type C



Cell type D

CELL TYPE	WIDTH W1/W2	HEIGHT	DEPTH	
A	38 / 16	50	245	
B	115 / 55	50	245	
C	38 / 16	100	245	
D	115 / 55	100	245	
SAMPLE CELL CONFIGURATION				
TIP	NUMBER OF COVERS	EYE TYPE	NUMBER OF CELL IN ONE FLOOR	TOTAL NUMBER OF CELL
1	30	30*A	78	2340
2	30	30*B	26	780
3	15	15*C	78	1170
4	15	15*D	26	390
5	25	25*A	78	2080
	5	5*B	26	
6	20	20*A	78	1690
	5	5*D	26	
7	15	15*A	78	1560
	15	15*B	26	
8	10	10*A	78	1040
	10	10*D	26	
9	5	5*A	78	780
	5	5*B	26	
	10	10*D	26	
10	10	10*C	78	910
	5	5*D	26	

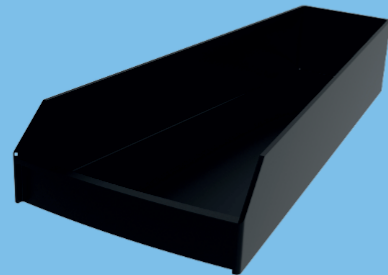


***S Toolkit**

Width	Depth
32 / 13	230

Tambour Toolkit :

It facilitates the receipt of products stored in the product exit system.



***M Toolkit**

Width	Depth
110 / 55	230

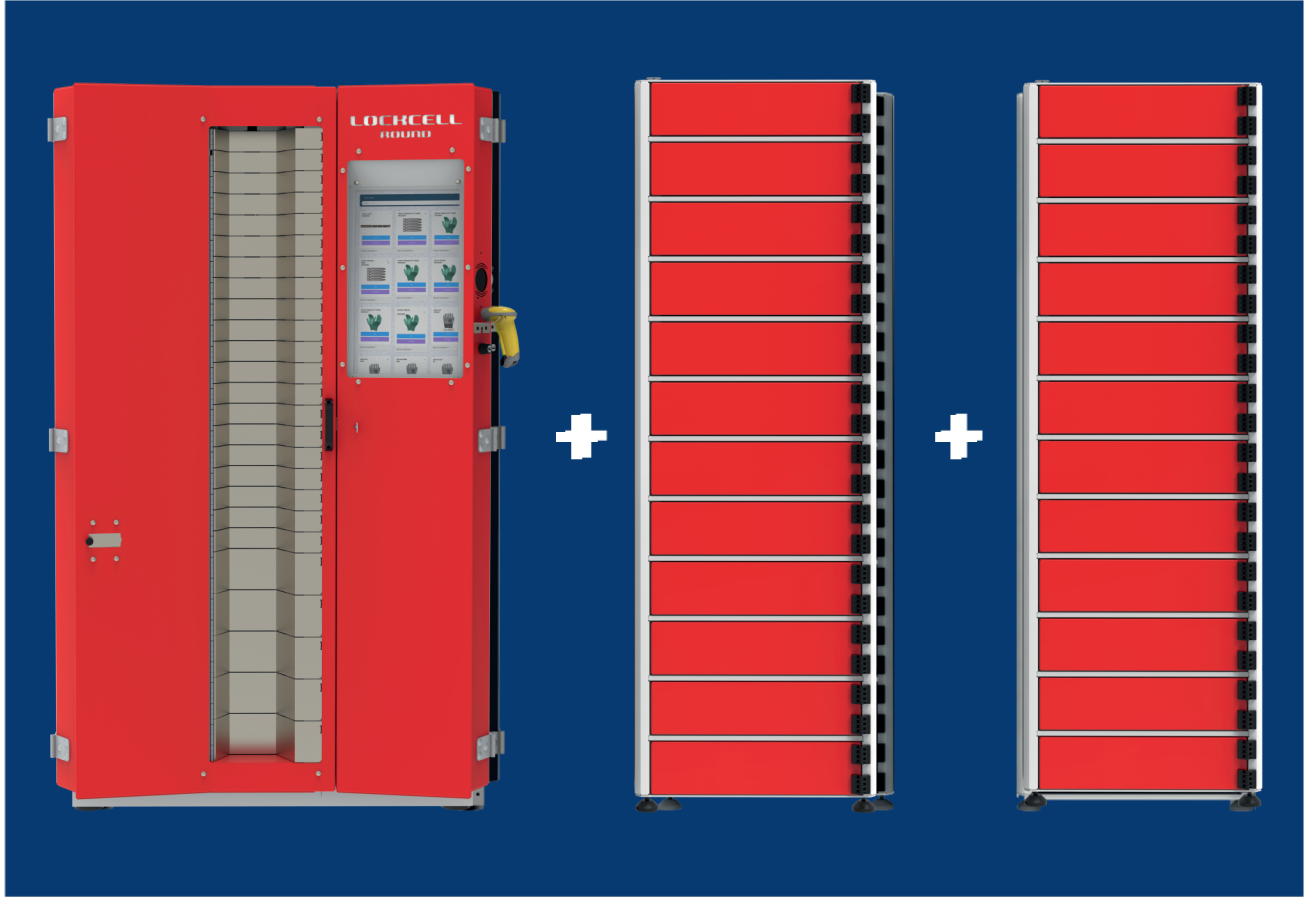
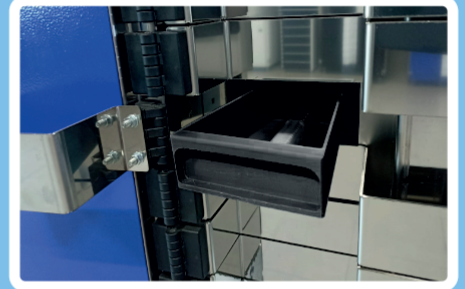
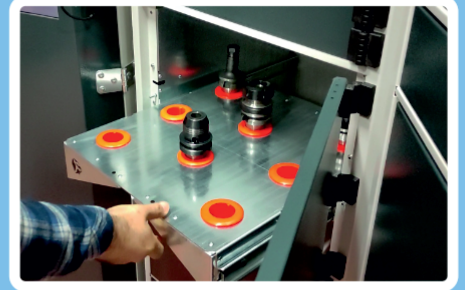
***Option**

Additional Module

LOCKCELL®Round & LOCKCELL®

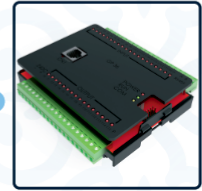
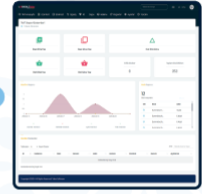
- Possibility to integrate up to 64 stations with Lockcell Talas software.
- Lockcell Box interior design available optionally.
- Possibility of custom design with 3 different eye options.
- Storage of large-volume products such as occupational safety equipment, hand tools.

-*Option





LOCKCELL®



Your products are under control

LOCKCELL BOX

LOCKCELL BOX is a locked automated storage system due to storage to small and intermediate size products. There are maximum 16 lock cell in LOCKCELL BOX which being new generation on automated storage systems. Therefore not only can storage many product range but also can storage PPE products which use much in safely.

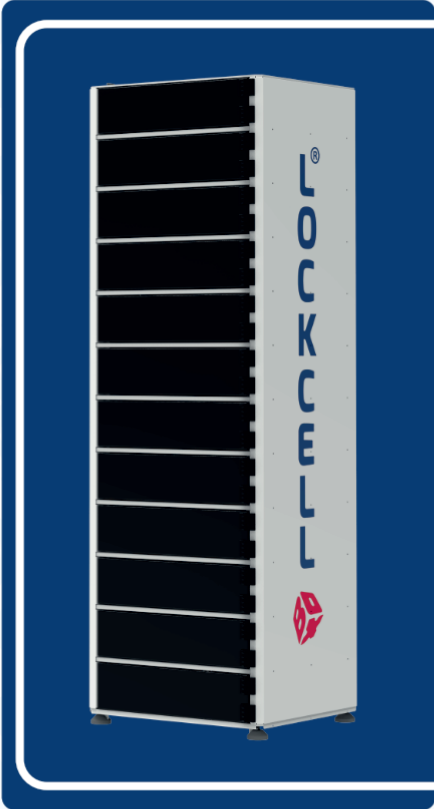
LOCKCELL BOX is controlled by LOCKCELL TALAS software and it communicate more than one machine. You can add more than one modul due to this qualification.

It offers storage to different size products in %100efficiency due to different cell sizes.Relevant cap will open automatically,You can reach products that you want on shortest way due to it. Cutting tools, medicine, electronic equipment, industriel equipment, computer equipment, PPE, portable hand tools, keys can be storage with LOCKCELL BOX.



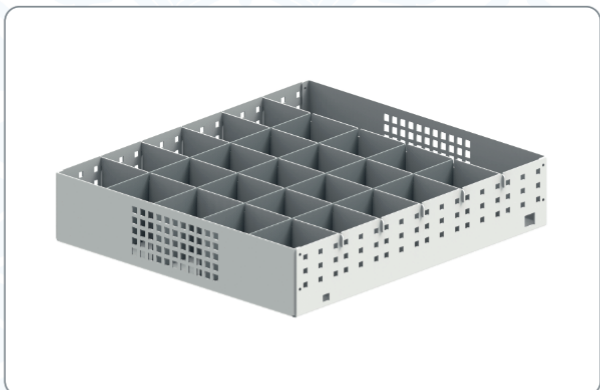
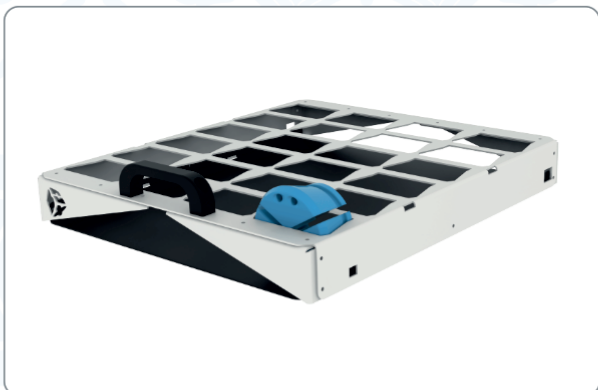
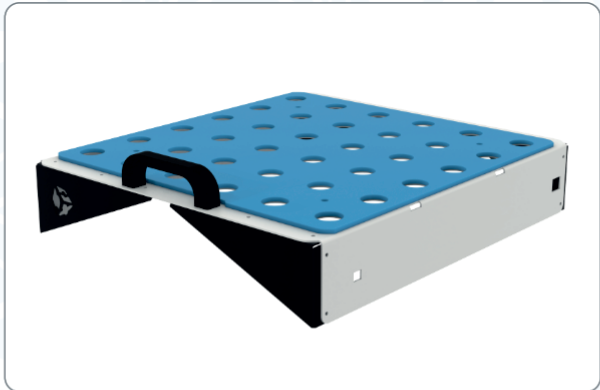
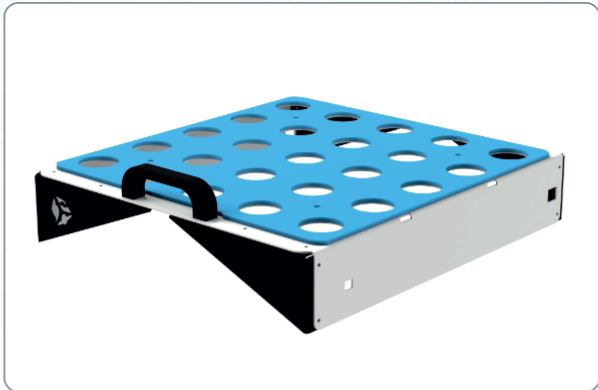
LOCKCELL BOX GENERAL FEATURES

- Rapid reaching due to perfect ergonomic design.
- Access to products in the other cells is impossible due to opening of the relevant cell.
- It offers ease of handling in Office or factory due to compact design with 0.5mx 0.5m size
- You can adjust machine layer as you want due to different cell types.
- Cost savings due to optimization of current warehouse capacity.
- Greater productivity due to faster product access.
- Protection and safety of personnel and stored products.
- Barcode reader.
- High stock capability with large volume.
- Safe sheet metal structure.
- Oven-daying sheet metal parts.
- User login with password and/or card.
- Operating voltage: 230V/50Hz.
- 21" touchscreen.
- Windows10 Pro operating system.
- Lockcell talas software.
- * Power supply (UPS)





Example drawer configuration





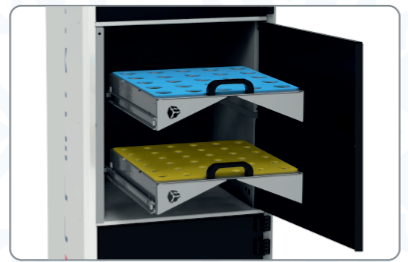
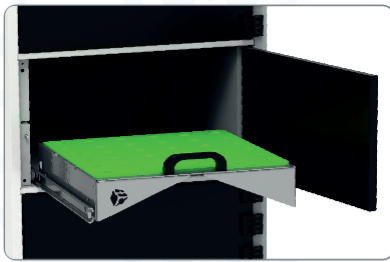
Type A eye



Type B eye



Type C eye



	EYE TYPE	H mm	D mm	W mm	H "	D "	W "
LCB 142	A	142	505	495	5,6	19,9	19,5
LCB 299	B	299	505	495	11,7	19,9	19,5
LCB 455	C	455	505	495	18,5	19,9	19,5

Lockcell Box outside dimensions	Width = 630 x 530	Height = 1.950
--	--------------------------	-----------------------

Example Eye Configuration				
Type	Number of caps	Cell type	Number of cell in a single layer	Total number of cell
1	12	12*A	12	12
2	6	6*B	6	7
3	5	5*A	5	8
	2	2*B	2	
	1	1*C	1	
4	4	4*A	4	8
	4	4*B	4	
5	3	3*B	3	5
	2	2*C	2	

LOCKCELL®

TMT TOOLS

TMT TOOLS is the Turkish company which design and manufacture automated storage systems for every sector and industrial area with LOCKCELL brand. At the same time TMT TOOLS is manufacturing automation aided automated storage systems in order to storage for different size products, small electronic parts, medicine sector, big parts such as mould sector, automobile and motor parts. Our basic principle is to accept customer satisfaction as our first priority, to provide solutions that add value to our customers, to provide a happy and reliable working environment by ensuring the continuous development of our employees and to produce value-added technological machines

LOCKCELL®*talas*
Industry 4.0 APPLICATIONS

LOCKCELL®*master*

LOCKCELL®*plus+*

LOCKCELL®*round*

LOCKCELL®*meD*

LOCKCELL®

LOCKCELL®*///ASRS*

LOCKCELL®*TOWER*

LOCKCELL®*X*



TMT MAKİNE SAN. VE TİC. LTD. ŞTİ.



İTOSB 12. STREET NO: 3/13/18 TUZLAPLUS
34953 TUZLA-İSTANBUL/TURKEY



info@tmtmakine.com.tr
www.tmtmakine.com.tr



+90 216 593 4361



YUTA MAKİNA MÜHENDİSLİK İNŞ. BİLG. SAN VE TİC. LTD. ŞTİ



İTOSB 12. STREET NO: 3/13/18 TUZLAPLUS
34953 TUZLA-İSTANBUL/TURKEY



info@yuta.com.tr
www.yutamakina.com.tr



+90 216 702 1194